

## Frequently Asked Questions

**Does the parent have to be present for the appointment?**

Parents are encouraged to attend, but it is not required for the appointment. However, parents will ALWAYS be notified prior to scheduling and during the appointment.

**Who will my child be seeing?**

A nurse practitioner located at Benton Family Health Care will be seeing your child over the computer.

**What can the provider do for my child?**

The provider will be able to order tests: Strep, Flu, and urine analysis. She will also be able to send (electronically) medication to the pharmacy of the parents' choice.

**Who can be seen through this program?**

Ocoee Regional Health offers this service to elementary students, school staff, and all employees immediate family members.

**Is there a cost to services?**

No student will be billed. Any staff member will have their insurance billed and will have a \$25 co-pay.



**Benton Family Health  
Care Center**  
6784 Highway 411  
Benton, TN 37307

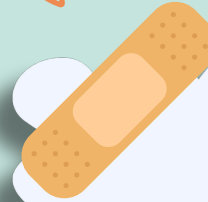
Phone: (423)338-2831

<https://ocoeeregional.com>

**Ask your school  
nurse about  
signing up!**



## Polk County Schools Care At The Schools



## C.A.T.S. School Telehealth Program



**Providing Health Services  
to Students and Staff**



## What is Telehealth?



A school-based telehealth program is a collaborative partnership between schools, school nurses, and local health providers. The partnership allows for certain healthcare services to be delivered directly in the school clinic.


Assessments and evaluations by a licensed healthcare provider are completed using HIPAA compliant, encrypted telemedicine technology, including high-definition, real-time videoconferencing and state of the art digital scopes for primary care acute issues.

We believe that our school-based telehealth services are offering a step in the path toward every child having access to high quality primary acute care in the local community.

## OUR SCHOOL-BASED PROGRAM OFFERS THE FOLLOWING SERVICES

### Care for Acute Illnesses:

- Allergies (seasonal)
- Conjunctivitis (pink eye)
- Cough, Colds
- Earaches
- Flu
- Impetigo
- Lice
- Nausea, vomiting, diarrhea
- Sore throat
- Skin rashes
- Upper Respiratory Infections
- Urinary Tract Infections



### Lab Tests

- Strep
- Flu
- Urine Analysis



### How can a student participate?

- A student's parent must "opt" in to participate in the program.
- An enrollment package must be completed and returned to the school nurse.
- The enrollment forms are available from the school nurse.



### How is an appointment scheduled?

- A teacher may send the child to the school nurse's office and if the nurse identifies the need for a doctor's appointment, the nurse will contact the student's parent for permission to schedule the visit.
- The parent may also contact the school nurse and request an appointment to be made for the student.

